

—
BLOQ

creative
carpet tiles



THE WORKPLACE
RHYTHM

—
BLOQ

creative
carpet tiles



© Rijksmuseum, Genemuiden

Our story

Being part of Betap, BLOQ can build on more than **100 years of experience** in the flooring sector. Betap grew from a local manufacturer of rush mats in 1918 to an internationally renowned carpet manufacturer.

Working with some of the most reputable architects, designers and commercial carpet partners, Betap's **high-traffic commercial carpet** is used across the world in prestigious office buildings, hotels, universities, museums and various leisure applications. Betap is your partner of choice for commercial carpet.



© Het Rijksmuseum, Frans Hals

Nice to know

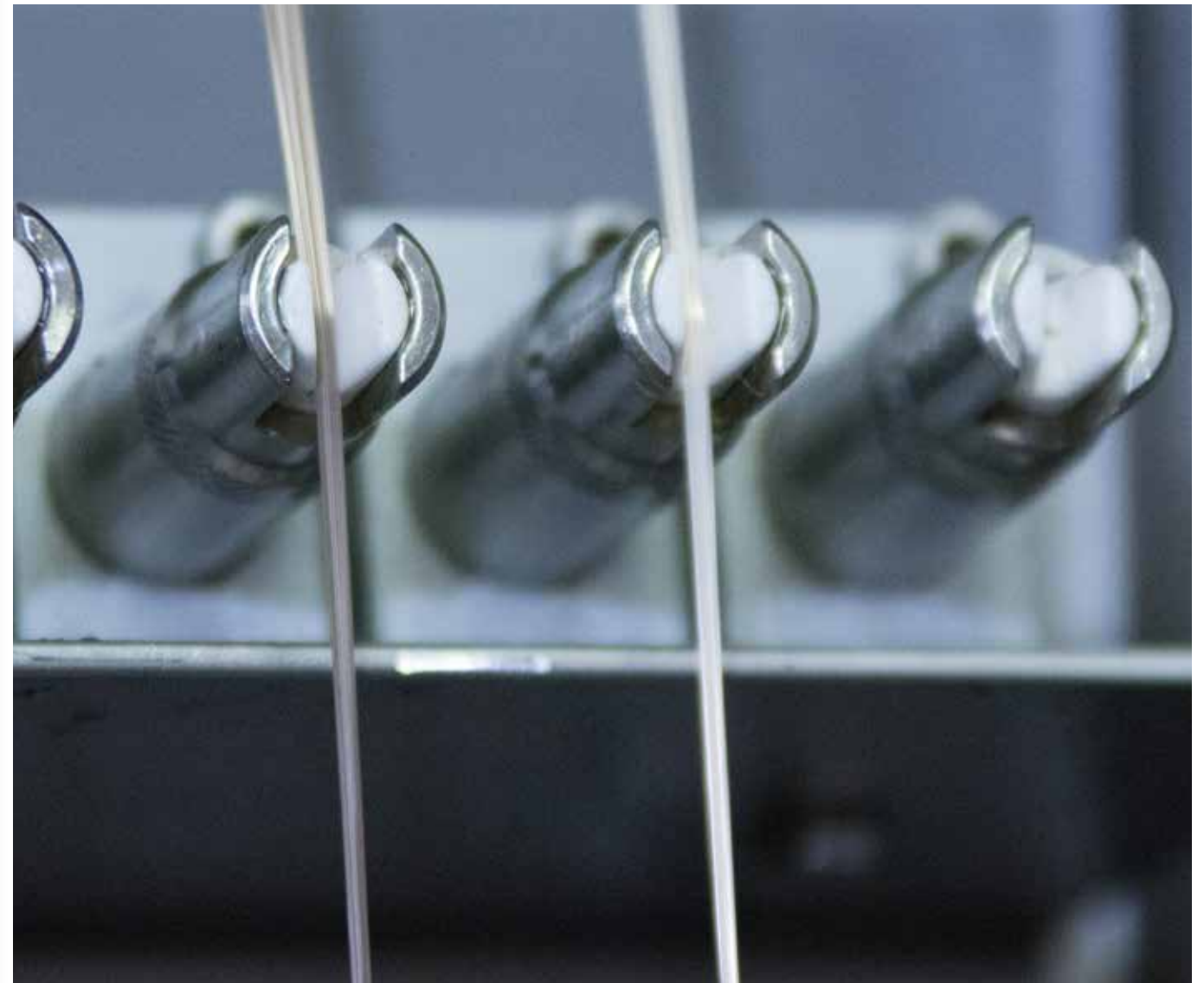
The colour ochre in the BLOQ logo refers to the rushes and the colour palette of the Golden Age in Holland.



High-end production line

Group Betap is an **innovative carpet manufacturer** in Genemuiden (The Netherlands) with a vertically integrated production line for tufted and non-woven floor coverings, as well as an own yarn production line.

With BLOQ, we are developing and producing **creative carpet tiles** that comply with the stringent regulations for the commercial market. We offer high-performance tiles focused on office projects, that are sound absorbing and have the best results in fire safety. Our products are also produced following the strictest standards in sustainability.



The Workplace

RHYTHM is part of The Workplace collection. With this **mainstream collection** group you mark your own, personal workspace. Feel free to **play and combine with three collections**: TRADITION, CONNEXION and RHYTHM.

The Workplace collections also match perfectly with our The Binary collection, which uses the same colours.



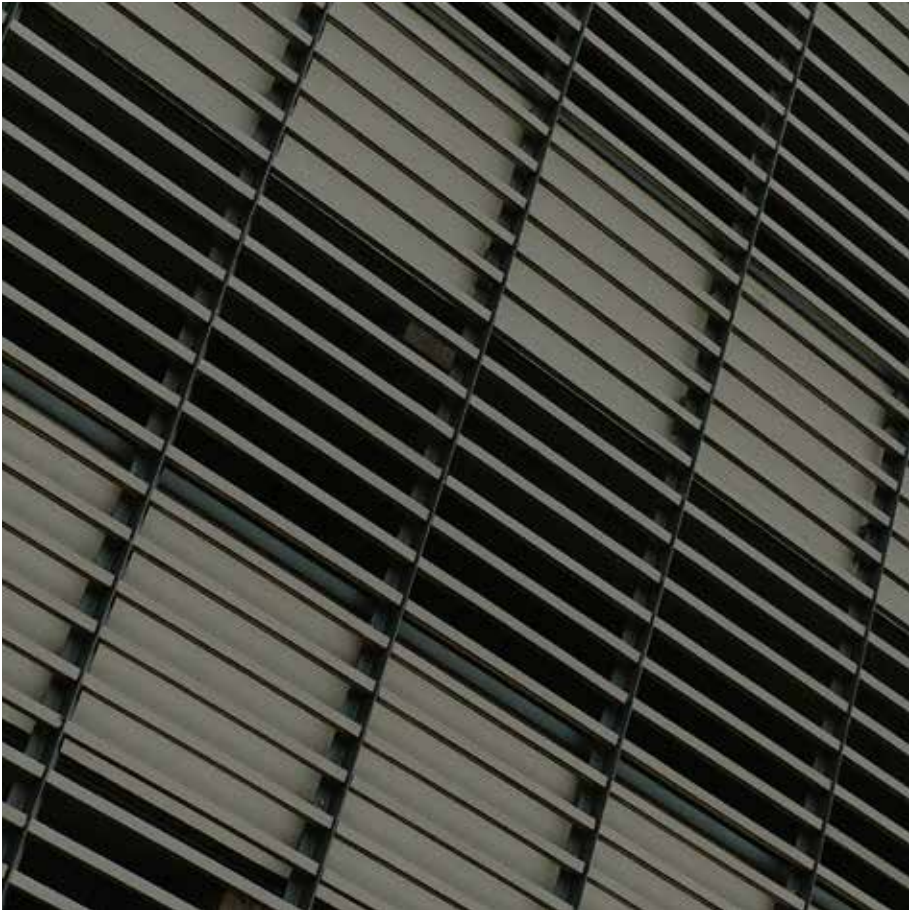
A mixed striped pattern made to unite

RHYTHM

TRADITION

CONNEXION

THE WORKPLACE
RHYTHM



Inspiration
is everywhere

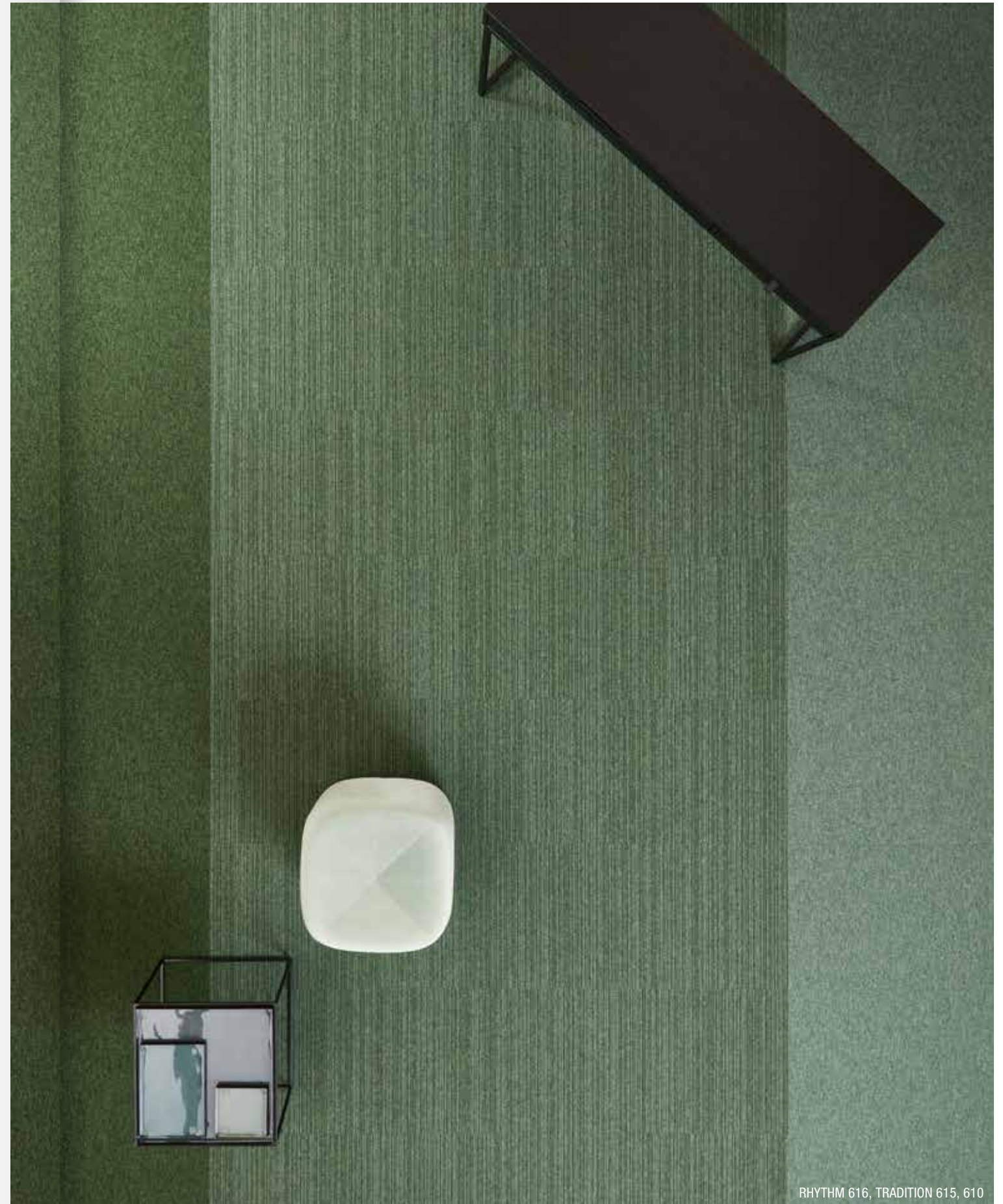
Striped pattern



Get in line

RHYTHM is a carpet tile of 50 x 50 cm. This **basic tile** represents the regularity of daily life. It makes a perfect marriage with TRADITION. The **striped pattern** of RHYTHM unites two coloured zones, consisting of TRADITION tiles.

Do you feel the rhythm?



RHYTHM 616, TRADITION 615, 610



RHYTHM 616



RHYTHM 936

Colour range

RHYTHM comes in **eight unique colours**:
five tone-on-tone colours and three bright colours.

You can use the colours pure as they are, or combined.
Discover the fun to play with the matching TRADITION
tones and unite with the RHYTHM tiles.

*Matching
Tradition tones*



TRADITION 915 CLOUD



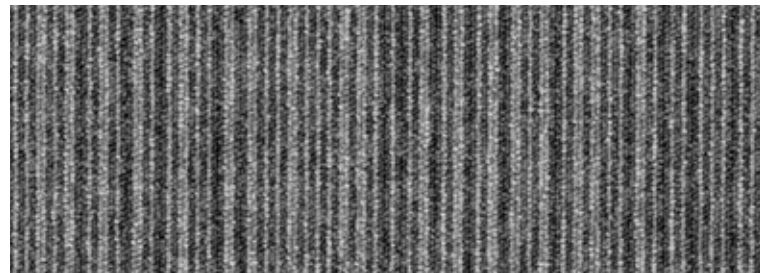
RHYTHM 936 BEAT



TRADITION 935 SLATE



TRADITION 925 FLINT



RHYTHM 941 FREQUENCY



TRADITION 940 ANTHRACITE



TRADITION 110 LINEN



RHYTHM 121 MELODY



TRADITION 120 PEAT



TRADITION 115 BIRCH



RHYTHM 811 SILENCE



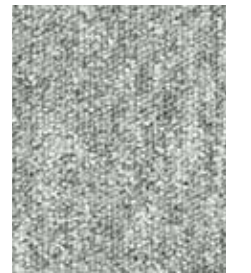
TRADITION 810 BARK



TRADITION 905 ROCK



RHYTHM 906 MUTE



TRADITION 105 HEMP



TRADITION 215 TERRA



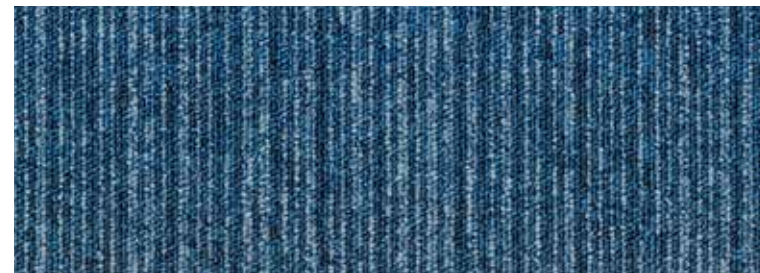
RHYTHM 216 MOTION



TRADITION 210 ORANGE



TRADITION 520 OCEAN



RHYTHM 521 SYNCHRONY



TRADITION 505 DENIM



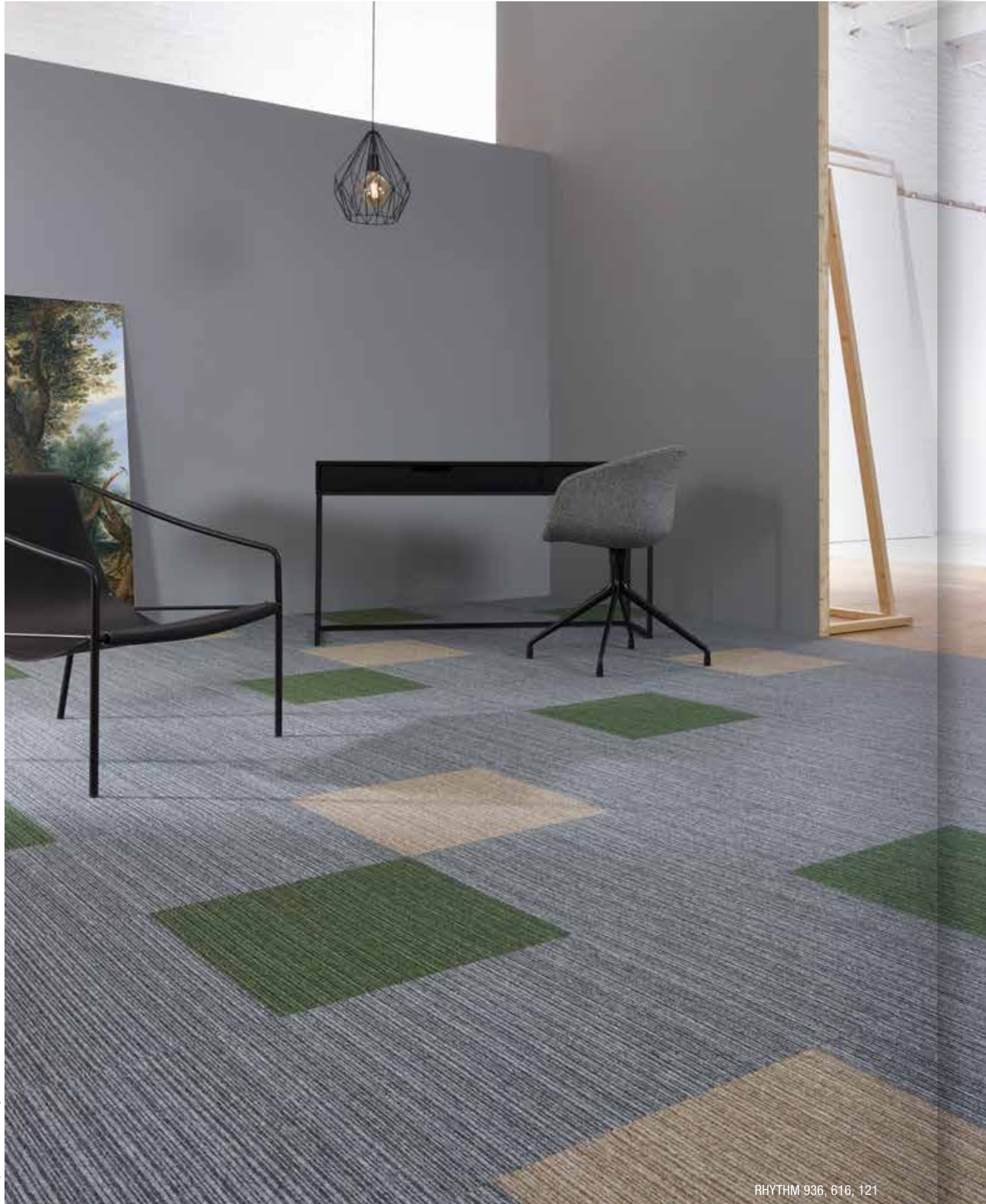
TRADITION 615 FOREST



RHYTHM 616 SOUND



TRADITION 610 JADE



RHYTHM 936, 616, 121

© Het Rhythmmuseum, Jan Breughel



RHYTHM 936

Pure or mixed

Use the colours pure in **one colour tone** or **dare to mix** with other tones. Soft hues stimulate a homely feeling at work, current colours meet today's trends.



RHYTHM 936, 121, 616



© Het Rijksmuseum, Jan Breughel

RHYTHM 616, TRADITION 615, 610

Highlights

BITBACK

BLOQ uses **Bitback**, Modified Bitumen, which consists of 70% recycled content.

Tiles made with Bitback deliver great acoustic results such as **high sound absorption and insulation**, as well as **noise reduction**. Therefore carpets made with this sustainable backing contribute substantially to personal health and comfort.



AQUAFIL
synthetic fibres and polymers

SOLUTION DYED YARNS

BLOQ uses 100% Polyamide 6 Solution Dyed Nylon from **Aquafil**, the best and leading supplier for carpet manufacturers. Solution dyed means **better colour fastness** and the best results to light and water.

LIGHT REFLECTANCE VALUES

Light Reflectance Value (LRV) is a scale that measures visible and usable light reflected from an illuminated surface. The percentage identifies how much light a colour reflects or absorbs. 0% reflects no visible light, 100% reflects all light.

COLOUR	LRV av	L
121	18.60	50.21
216	10.39	38.53
521	4.87	26.35
616	7.20	32.27
811	10.11	38.03
906	23.10	55.19
936	12.83	42.50
941	7.59	33.12



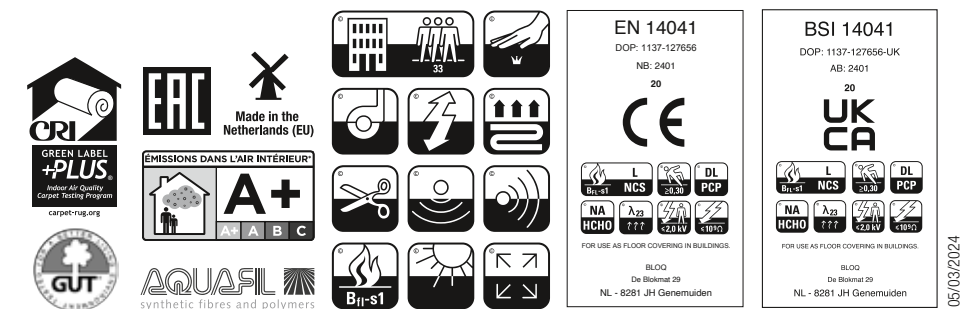
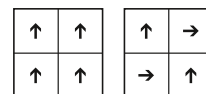
THE WORKPLACE RHYTHM

SPECIFICATIONS

TYPE OF MANUFACTURE	Tufted Loop Pile 1/10"
ISO 2424	
PILE FIBER COMPOSITION	100% Polyamide 6
ISO 2424	Solution Dyed Nylon made by Aquafil
SECONDARY BACKING	Bitback, Modified Bitumen
ISO 2424	70% Recycled Content
DIMENSION	50 x 50 cm
EN ISO 24342	
PILE WEIGHT	540 g/m ²
ISO 8543	
SURFACE PILE WEIGHT	330 g/m ²
ISO 8543	
TOTAL WEIGHT	4 250 g/m ²
ISO 8543	
TOTAL THICKNESS	6.0 mm
ISO 1765	
PILE HEIGHT	2.7 mm
ISO 1766	
PILE DENSITY	0.123 g/m ³
ISO 8543	
NUMBER OF TUFTS	156 000 /m ²
ISO 1763	
DIMENSIONAL STABILITY	≤ 0.2%
ISO 2551	
NUMBER OF COLOURS	8
PACKAGING	Box: 20 tiles / 5 m ² Pallet: 200 m ²

PERFORMANCE

CLASSIFICATION	33
EN 1307	
LUXURY RATING	LC1
EN 1307	
CASTOR CHAIR RATING	A: Intensive use
EN 985	
FIRE CLASSIFICATION	B _{fl} -s1
EN 13501-1	
IMPACT SOUND INSULATION	ΔL _w : 25 dB
EN ISO 10140-3	
SOUND ABSORPTION	Frequency Hz 125 250 500 1000 2000 4000
EN ISO 354	α _s 0.00 0.02 0.06 0.16 0.30 0.35
NOISE REDUCTION	α _w : 0.15
EN ISO 354	
PERMANENT ANTISTATIC	≤ 2 kV
ISO 6356	
TRANSVERSAL RESISTANCE	≤ 1 X 10 ⁹ Ohm
ISO 10965	
THERMAL RESISTANCE	0.061 m ² K/W
ISO 8302	
COLOUR FASTNESS TO LIGHT	≥ 7
EN ISO 105-B02	
COLOUR FASTNESS TO WATER	≥ 4
EN ISO 105-E01	
RUBBING FASTNESS	≥ 4
EN ISO 105-X12	
GUT N° PRODIS	0D32FA3E



All rights reserved to alter technical specifications.

www.bloq.nl